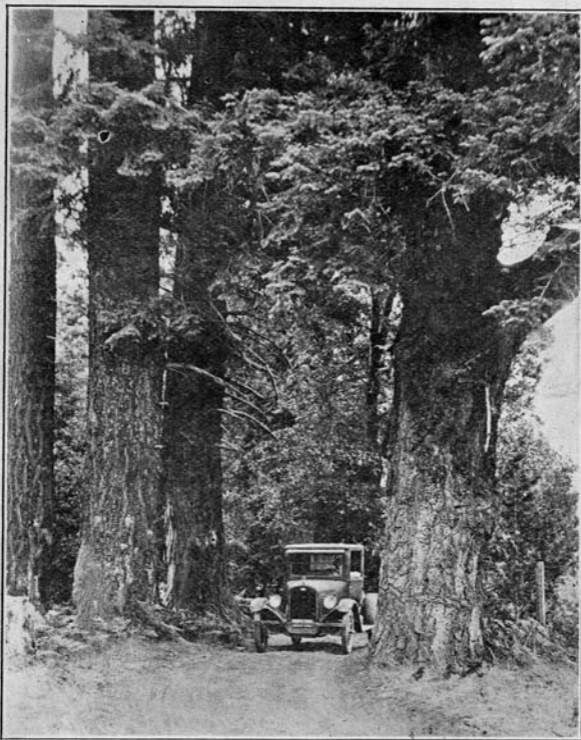


Palomar Mountain

CAMP SITE & CLUB HOUSE



829 E STREET

PHONE 614-45

201 F STREET

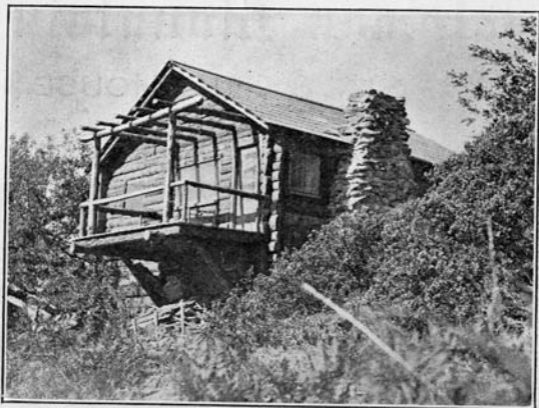
PHONE 613-09

SAN DIEGO, CALIFORNIA

SPC
Pave
FBI
F 268
.515
P 32
1925

5-14-45

F1892

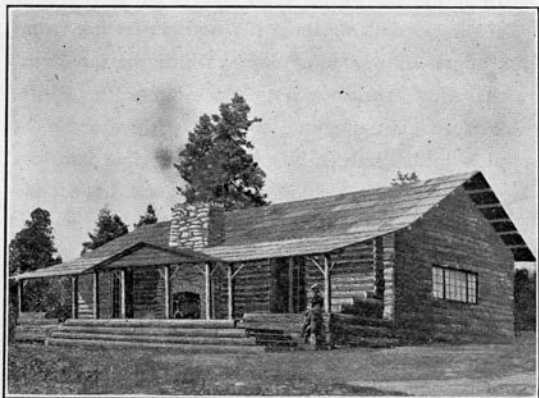


PALOMAR MOUNTAIN CAMP SITE

The Palomar Camp Site is located on the extreme top of the South Palomar ridge at an elevation of approximately 6000 feet and includes within its borders some of the finest timber on the mountain. The campsite also commands the justly famous Palomar view and is cooled in summer by gentle breezes direct from the ocean less than thirty miles away. It is possible for one's mountain home to be secluded among the big trees or perched upon some rocky promontory overlooking the view.

About forty cabins have already been built with several new ones under construction. Building material may be had on the ground at San Diego prices plus the actual cost of freighting. Most attractive cabins also may be constructed of native cedar and fir half-sawed logs. Cabin sites vary in size up to several acres and are supplied with water by the Palomar Mutual Water Company, a non-profit organization. A general store and restaurant which is prepared to supply camping equipment and groceries, is located near the center of the campsite. Lovers of riding will find good horses always available at reasonable rates.

Campsite prices are governed by the size, amount of view, timber, location and general attractiveness of the site.



THE PALOMAR MOUNTAIN CLUBHOUSE

The Palomar Mountain Clubhouse is centrally located on one of the scenic points of the Palomar Mountain Campsite. It is a company largely financed by the campsite owners. The main building is 30x60 feet and is in condition to be used for dances, parties and programs. A series of week-end events are planned for the vacation season beginning July 4th, which will include programs, dances and inspirational talks.

When completed the buildings will include a number of attractive cedar-slab sleeping cabins as well as the main building with wide veranda and double fireplace. Outside improvements will include tennis courts and croquet grounds. Ownership of a small amount of the capital stock of the company entitles the holder to full club privileges, besides offering an attractive investment.

AMUSEMENTS

Amusements include riding, hunting, trout fishing, hiking, campfire parties and dancing.

ACCOMMODATIONS

Furnished cabins may be rented at reasonable rates, but should be reserved in advance. Excellent table service is available at the dining room near the clubhouse.

ROADS

East route via El Cajon, Ramona, Santa Ysabel, Henshaw Lake and up the East grade, 75 miles from San Diego to the Campsite.

West route via Escondido, Valley Center, Rincon, and up the Nigger Canyon grade, 70 miles to the Campsite.

Both routes are in excellent condition for the summer and are wide, safe highways, but the East route is recommended as the easier drive, inasmuch as when present work is completed this year the grade up the mountain will be a seven per cent high-gear highway all the way to the top.

After reaching the top of the Mountain follow the Palomar Mountain Campsite signs to the Clubhouse.

THE PALOMAR MOUNTAIN TRIP

The round trip to the Palomar Mountain Campsite, a distance of about seventy miles, may be made pleasantly in one day, as the driving time one way is from three to four hours; but it is an outing upon which each added hour is added pleasure, especially is this true of the enchanting hours of sunrise and sunset.

The back country highway, intriguing one with its mist veiled foothills and the tranquility of its pastoral scenes leads to the twenty-mile long Rainbow drive winding up one end of Palomar and down the other. This scenic drive embraces a view stupendous in its magnitude; is bordered by flowers remarkable for their variety, abundance and beauty, and leads now and again through heavily wooded slopes reminiscent of Eastern and Northern forests.

In spring the purple lupin sprays the mountainside, the graceful Mariposa lily nods a greeting from the ledges, shining buttercups varnish the meadows with yellow, the showering blossoms of the white lilac often meet overhead to form pathways which rival a bridal arch, white myriads of less familiar blooms, sown at random by the great Landscape Gardener, inveigle the eye which delights in the perfection of detail.

In June the delicate, waxen clusters of azaleas perfume the air, and later the tiger lilies lend an unexpected glow to their canyon habitats. The cool, calm atmosphere of fall brings out a new symphony in trees, shrubs and skyline. The colors seem to ripen and the distant view becomes so clarified that the coast lies in relief like a map drawn by some giant artist who, "splashed on a ten league canvas, with brushes of comet's hair." Then winter, not to be outdone, comes with draperies of snow and jewels of ice to dress the trees in shimmering, lacy, whiteness. In fact, each month gives a reason all its own for making the trip to Palomar.

For the lover of wild life Palomar affords no end of delightful surprises. Mountain quail, innumerable song birds, and graceful tree squirrels abound daily; more rarely a deer, fox, bobcat or mountain lion may be momentarily glimpsed on the mountainside.

The location of Palomar mountain, only thirty miles from the sea, with an elevation at the same time of over a mile, makes possible the heaviest of timber and the coolest of summers. Individual trees are numerous which measure more than six feet in diameter and tower one hundred and fifty feet skyward. Varieties include sycamore, spruce, cedar, oak, hemlock, fir, pine, dogwood and manzanita.

The distant view includes many miles of tumbled, picturesque mountains, a vast expanse of foothills interspersed with fertile valleys and dotted here and there with lakes, with a background of the blue water of the Pacific extending 150 miles from Catalina to Old Mexico; while directly beneath one's feet is spread the exquisite picture of the four thousand feet deep canyon of the San Louis Rey. For those who yield to the enchantment of Palomar and linger to look long, the sun on a summer afternoon may burnish the ocean until it dazzles the eye like melted gold; on an evening it may turn into a sea of opal the billowy clouds which make islands of the higher mountain peaks; or, more often, the night drifts down in layers of blue.

The regular stage and sight-seeing cars leave all through the week for the mountain. For any information concerning the Campsite, Clubhouse, sight-seeing trips or stages, phone or call and see W. R. Wallace or S. S. Purkey, 614-45 or 613-09, 829 E Street or 201 F Street, San Diego, Calif.